



2007 Climate Profile

CLIMATE PROFILE—ADDITIONAL INFORMATION

When reviewing your Climate Profile, please note the following:

- The data included in this document are based on annual data submitted to the WasteWise program.
- The GHG emissions reductions associated with waste prevention and recycling activities assume landfilling as the baseline disposal option.
- Some waste reduction activities have a greater impact on GHG emissions than others, and different material types have varying GHG impacts. Of course, recycling and waste prevention of all types of materials have beneficial GHG emissions impacts.
- Any resulting GHG emissions reductions that are less than 0.01 are automatically rounded to zero for the purpose of this document. However, that commodity may still make up a percentage of your organization's reductions.
- Each equivalency represents the total GHG emissions reductions from your activities. Reductions are expressed in:
MTCE = metric tons of carbon equivalent
CO₂E = carbon dioxide equivalent
- The equivalencies presented are not cumulative.
- Refer to the Greenhouse Gas Equivalencies Calculator located at www.epa.gov/cleanenergy/energy-resources/calculator.html for more information about equivalency factors used in this Climate Profile.



DISCLAIMER

This document is intended to help WasteWise partners quantify and communicate their GHG emissions reductions associated with their waste prevention and recycling activities. Data used in this report were obtained from WasteWise partners' 2007 Assessment Forms. The WasteWise program does not scientifically verify the accuracy of partners' reported data.

Greenhouse gases (GHGs) are emitted at nearly every stage of a product's life cycle, including during waste management. How organizations choose to manage their waste has significant implications on global climate change. The U.S. Environmental Protection Agency's (EPA) WasteWise program helps participating organizations reduce GHG emissions through waste reduction activities, benefiting both the environment and the organization's bottom line.

WasteWise helps partners reduce waste generation through waste prevention and recycling initiatives, and also provides this Climate Profile to assist partners in tracking reductions to their waste-related climate footprints. This Climate Profile is customized for your organization; it presents current and historical GHG emissions reductions resulting from activities related to WasteWise. The Climate Profile is a powerful tool for helping partners inform others about the link between waste and global climate change.

HOW TO USE THIS CLIMATE PROFILE

WasteWise distributes Climate Profiles to reporting partners annually to provide you with the means to understand and easily educate others about your organization's waste-reduction efforts and how you are helping to reduce GHG emissions. To target your message, this Climate Profile interprets your GHG savings in terms that are easily understood by all audiences and can be used in a variety of ways:

Gaining Support

Include information in your organization's next annual report to inform stakeholders and stockholders of your progress in reducing GHG emissions over the past year.



Educating Staff

Use internal newsletters and posters to educate employees about how your waste prevention and recycling activities result in GHG emissions reductions. For example, translate your activities to reductions in household energy use.



Informing the Public

Create press releases and Web site content to educate the public about your organization's role in reducing GHG emissions. For example, relate your GHG reductions to the equivalent amount of annual GHG emissions from passenger vehicles.



City of Clifton, New Jersey - Recycling Program: Making a Difference

2007 Waste Reduction Achievements

Waste Management Activity	GHG Emission Reductions (MTCE)
Waste Prevention	39.25
Recycling	13,518.61
TOTAL	13,557.86

These are equivalent to:



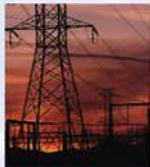
The annual GHG emissions from this many passenger vehicles

26
9,078
9,105



This many acres of standing forest (based on CO2 sequestration per tree)

1
346
347



The annual emissions from the energy consumption of this many households (based on annual emissions per household)

13
4,375
4,388



This many gallons of gasoline (based on CO2 emissions per gallon)

16,337
5,626,361
5,642,698



This number of propane cylinders used for home barbecues (based on CO2 emissions per pound of propane)

5,997
2,065,344
2,071,341



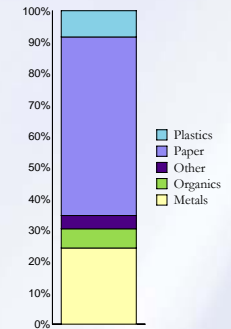
Tons of waste recycled instead of landfilled (based on CO2E emissions per ton of waste landfilled)

50
17,092
17,142

■ = Waste Prevention ■ = Recycling ■ = Total

2007 GHG Emission Reductions by Commodity

Commodity	Amount of Waste Prevented and Recycled (pounds)	GHG Reductions (MTCE)
Organics	37,694,324	832.47
Plastics	5,385,026	1,134.19
Paper	18,183,634	7,726.76
Other	13,344,915	571.94
Metals	3,570,684	3,292.50
TOTAL	78,178,582	13,557.86



2004 - 2007 GHG Emission Reduction Progress

Activity	2004	2005	2006	2007
	GHG Reductions (MTCE)			
Waste Prevention	0.00	76.45	287.80	39.25
Recycling	0.00	7.98	0.00	13,518.61
Total	0.00	84.43	287.80	13,557.86

