

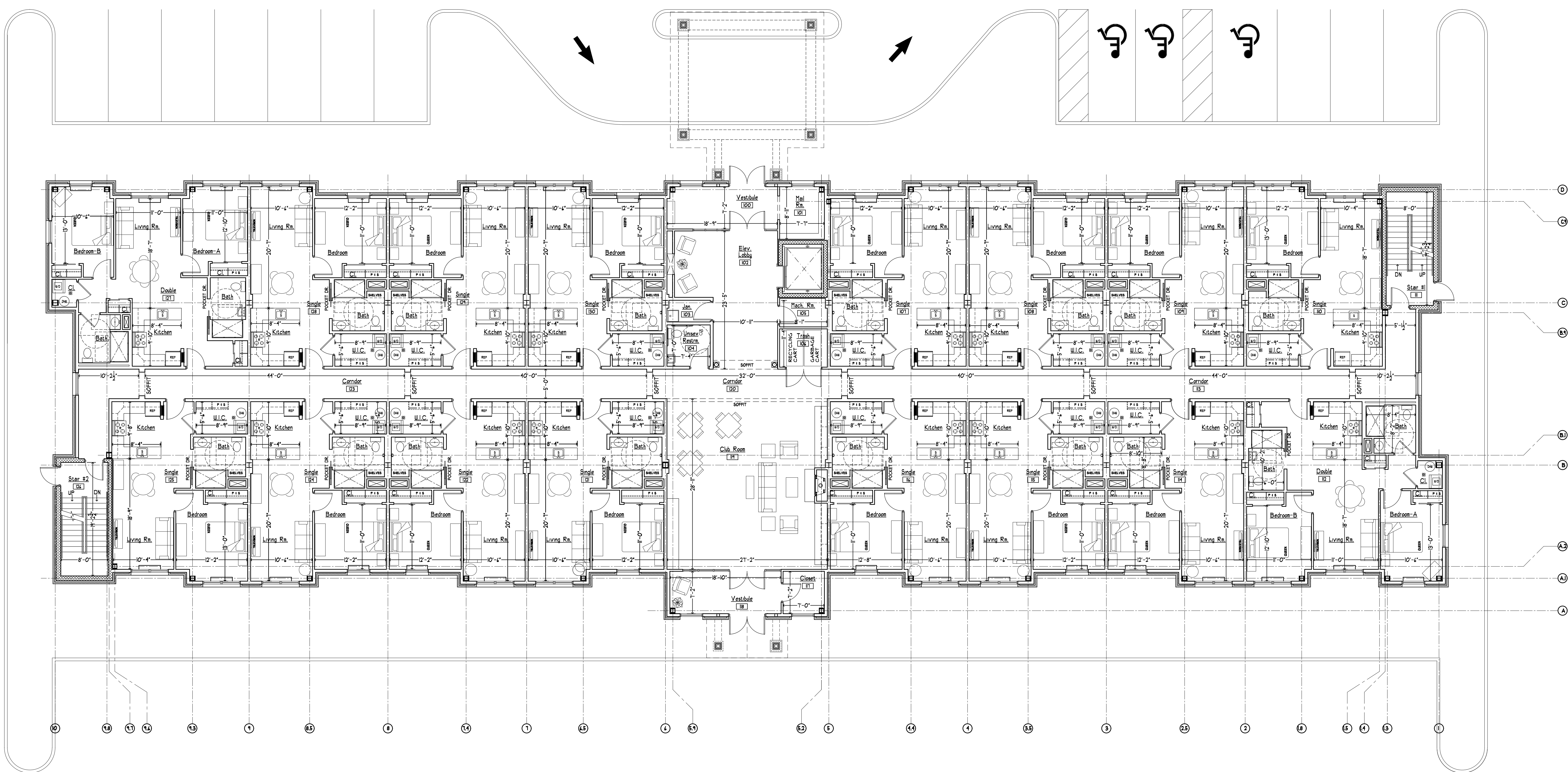
CLIFTON INDEPENDENT SENIOR LIVING
 Lot: 14 Block: 44.01
 Valley Road
 City of Clifton
 Passaic County, New Jersey

10-15-18
 11-08-18 Mtr.
 04-15-19 Bd. SUBMISSION
 12-07-20 Bd. SUBMISSION

NO ALLIANCE
 DOUGLAS J. COLEMAN, AIA, P.P.
 NJ LIC. NO. 24A02100
 PA LIC. NO. 84407845
 DE LIC. NO. 485545
 P.P. LIC. NO. 33100418500

18006 / CLIFTON I. S. L.

BOARD SUBMISSION
 NOT FOR CONSTRUCTION
 GROUND LEVEL FLOOR PLAN
A-1
 1 of 5



GROUND LEVEL ARCHITECTURAL FLOOR PLAN
 SCALE: 1/8" = 1'-0"

FLOOR AREA	
GROUND LEVEL	±15,841 SF 2 DBL BEDS / 14 SINGLE BEDS
SECOND LEVEL	±15,841 SF 2 DBL BEDS / 15 SINGLE BEDS
THIRD LEVEL	±15,841 SF 2 DBL BEDS / 15 SINGLE BEDS
TOTAL	±47,523 SF 4 DBL BEDS / 44 SINGLE BEDS 50 UNITS / 56 BEDS

© COPYRIGHT 2018 DOUGLAS J. COLEMAN AIA, P.P. ARCHITECT AND ASSOCIATES, L.L.C. - ALL RIGHTS RESERVED. ALL TRADE, SERVICE, MANUFACTURE AND/OR ASSOCIATED OR REPRESENTED BY THE DRAWING AND WRITTEN MATERIAL. APPROVING HEREIN CONSTITUTE THE ORIGINAL UNPUBLISHED WORK OF DOUGLAS J. COLEMAN AIA, P.P. ARCHITECT AND ASSOCIATES, L.L.C. AND THE SAME MAY NOT BE DUPLICATED, USED OR DISCLOSED TO ANY THIRD PARTY FOR ANY PURPOSE WITHOUT THE WRITTEN CONSENT OF THE ARCHITECT.