

City of Clifton, New Jersey - Recycling Program: Making a Difference

2007 Waste Reduction Achievements

Waste Management Activity	GHG Emission Reductions (MTCE)
Waste Prevention	39.25
Recycling	13,518.61
TOTAL	13,557.86

These are equivalent to:



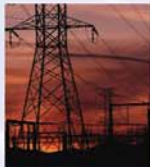
The annual GHG emissions from this many passenger vehicles

26
9,078
9,105



This many acres of standing forest (based on CO2 sequestration per tree)

1
346
347



The annual emissions from the energy consumption of this many households (based on annual emissions per household)

13
4,375
4,388



This many gallons of gasoline (based on CO2 emissions per gallon)

16,337
5,626,361
5,642,698



This number of propane cylinders used for home barbecues (based on CO2 emissions per pound of propane)

5,997
2,065,344
2,071,341



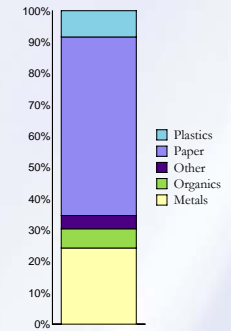
Tons of waste recycled instead of landfilled (based on CO2E emissions per ton of waste landfilled)

50
17,092
17,142

■ = Waste Prevention ■ = Recycling ■ = Total

2007 GHG Emission Reductions by Commodity

Commodity	Amount of Waste Prevented and Recycled (pounds)	GHG Reductions (MTCE)
Organics	37,694,324	832.47
Plastics	5,385,026	1,134.19
Paper	18,183,634	7,726.76
Other	13,344,915	571.94
Metals	3,570,684	3,292.50
TOTAL	78,178,582	13,557.86



2004 - 2007 GHG Emission Reduction Progress

Activity	2004	2005	2006	2007
	GHG Reductions (MTCE)			
Waste Prevention	0.00	76.45	287.80	39.25
Recycling	0.00	7.98	0.00	13,518.61
Total	0.00	84.43	287.80	13,557.86

